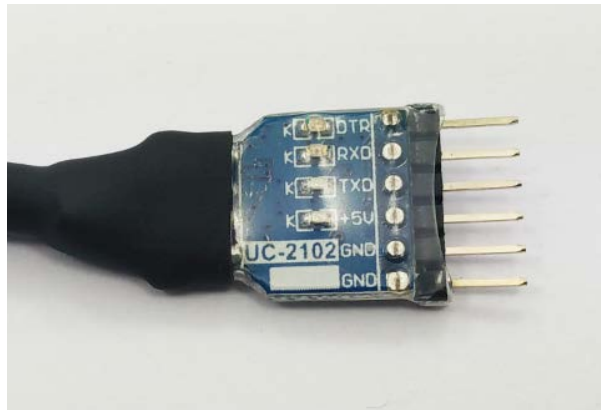


# How to debug the LC-2000 using the Debugger software

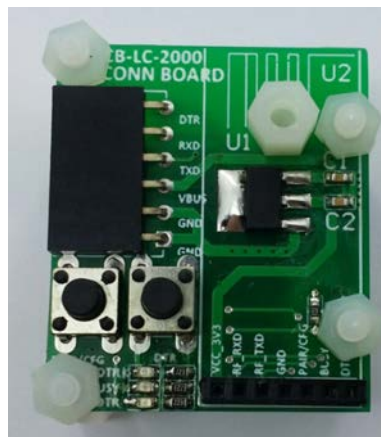
The purpose of this document is aim to facilitate users to debug LC - 2000 module.

## Hardware Requirements

- ◆ 1 x UC-2102



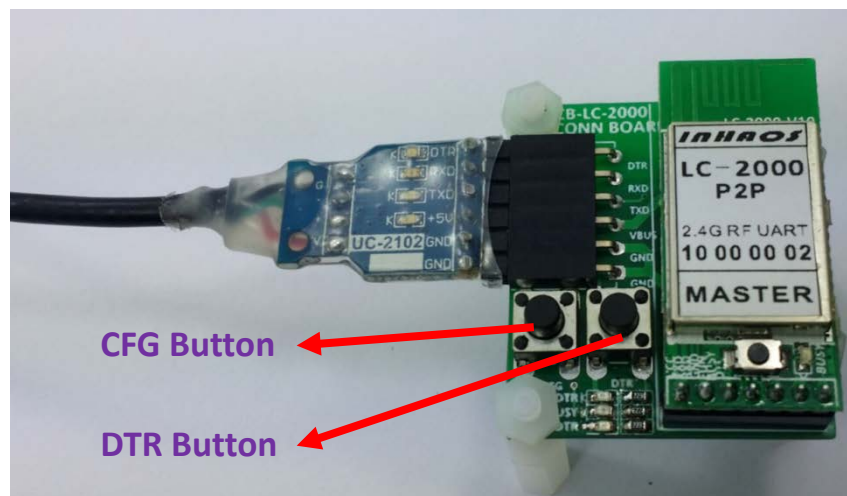
- ◆ 1 x CB-LC-2000



- ◆ 1 x LC-2000

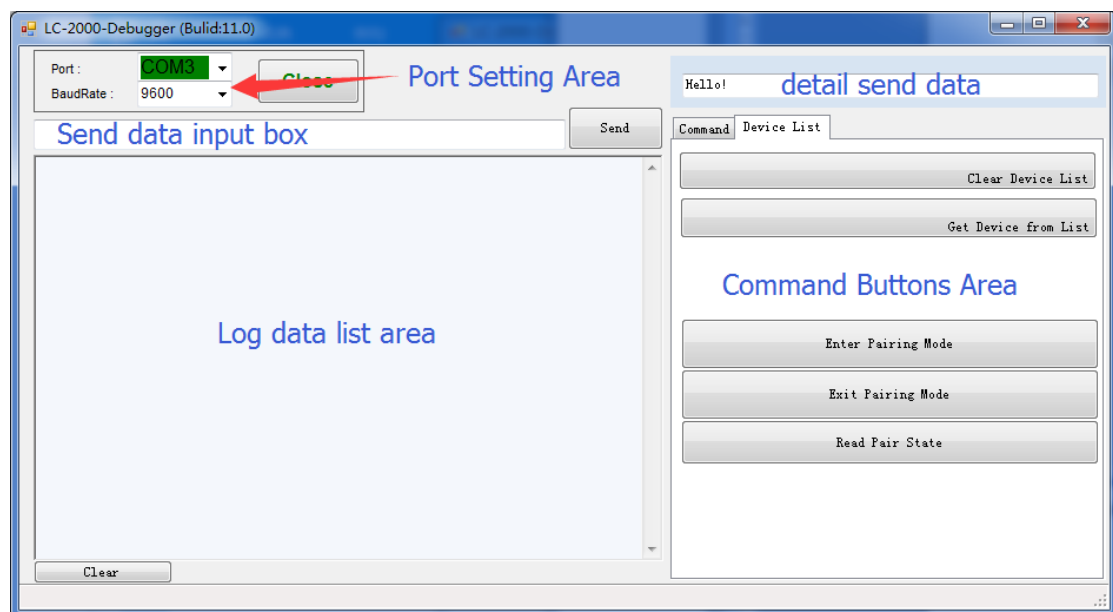


# Hardware Connection

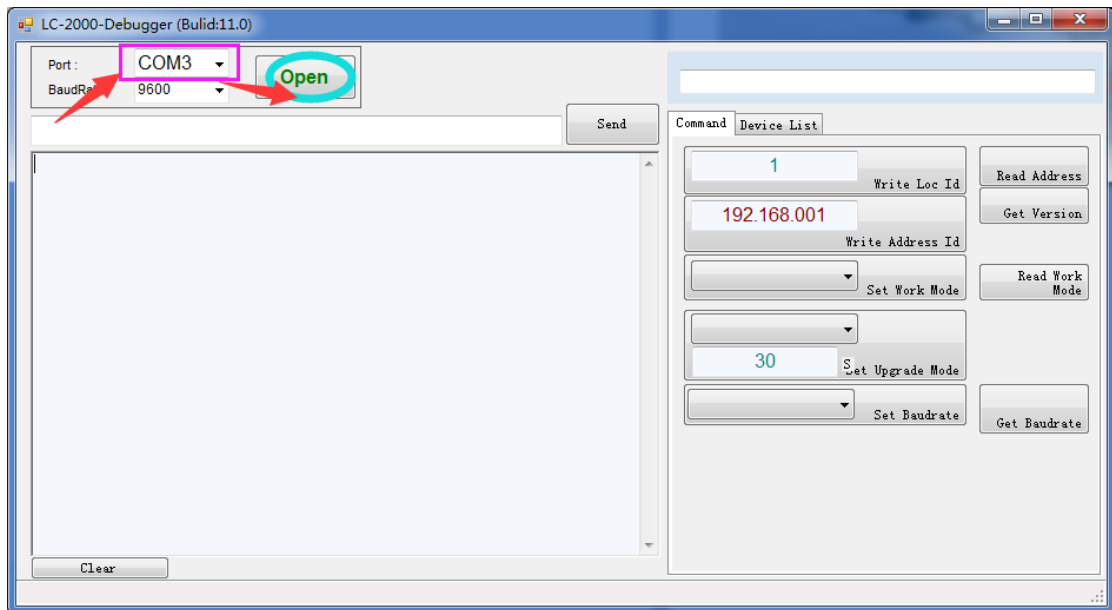


# Software Description

Open the LC-2000-Debugger.exe



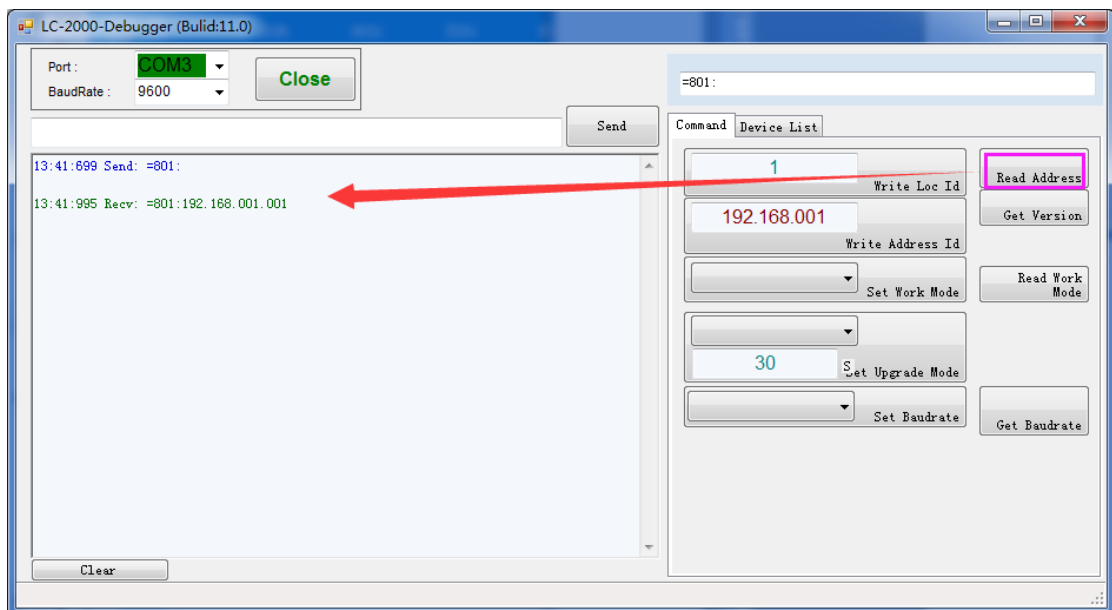
Select the COM port of the UC-2102, then click open



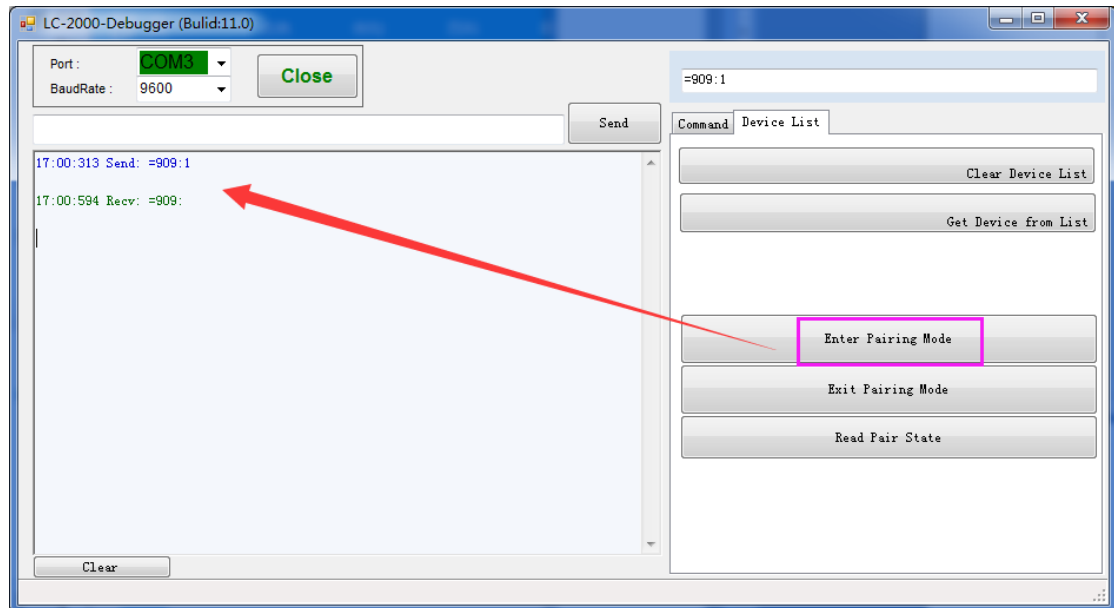
Before click any command buttons, please press down the CFG button let the LC-2000 switch into Configure mode firstly, otherwise the command data sent to LC-2000 will be treat as a transparent data other than a configure command. Then you can click any buttons at the command buttons area.

## For Example

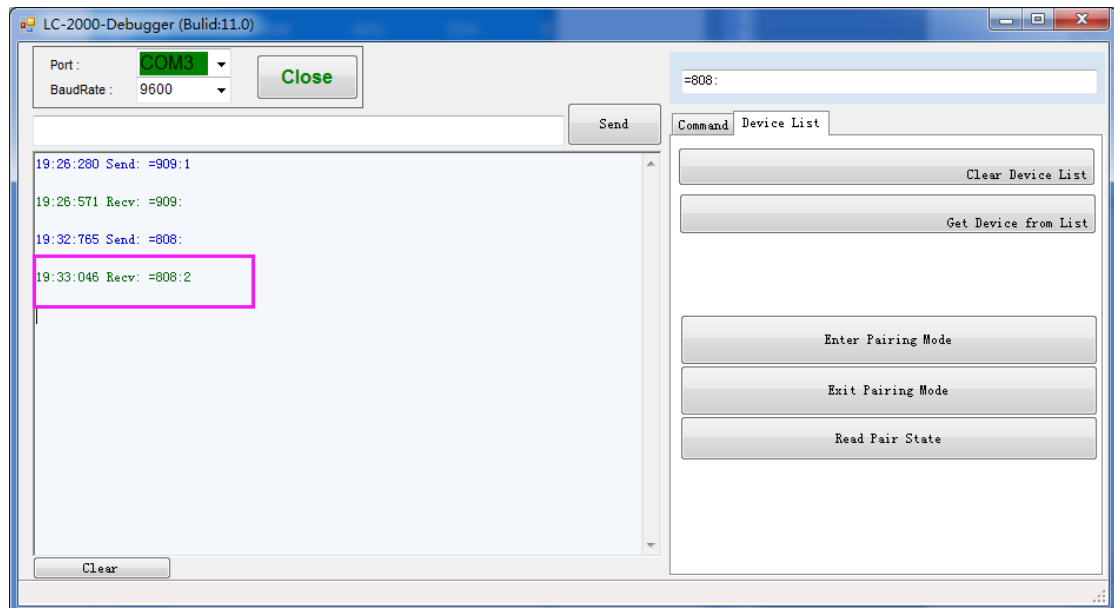
### Read Address



## Pairing Devices

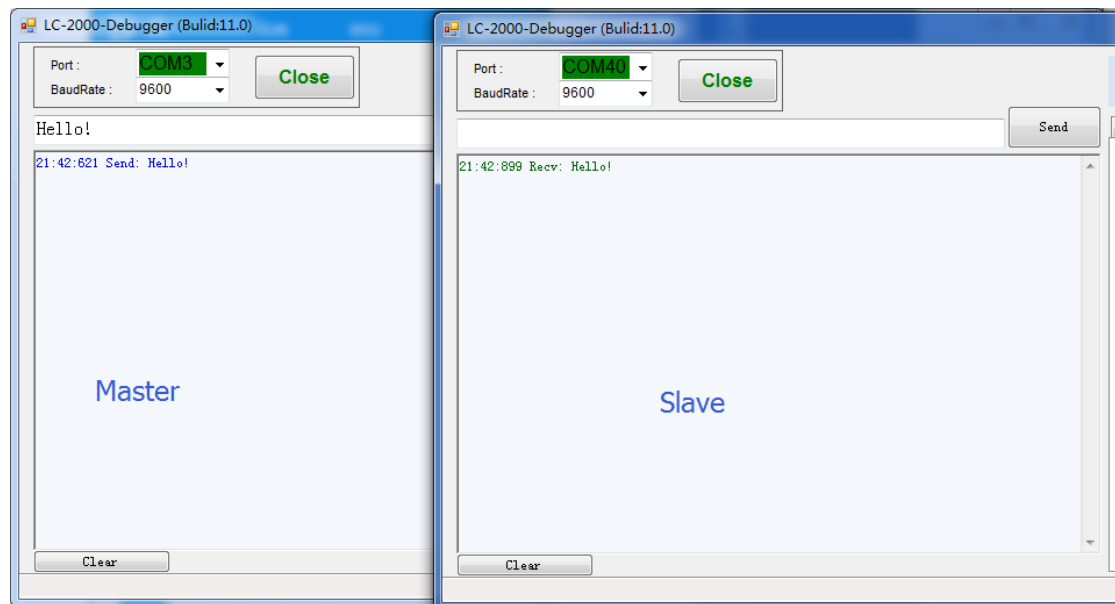


After enter the pairing mode the LED on the LC-2000 will flash.



Once both the master and slave modules are enter the pairing mode, the pairing will success. While read the pair state it will return state = 2.

## Send Data



## Receive Data

